



British Airways and Kansas City

Routes Europe – Bergen – May 2022

Regional Update

COVID Recovery

New Terminal

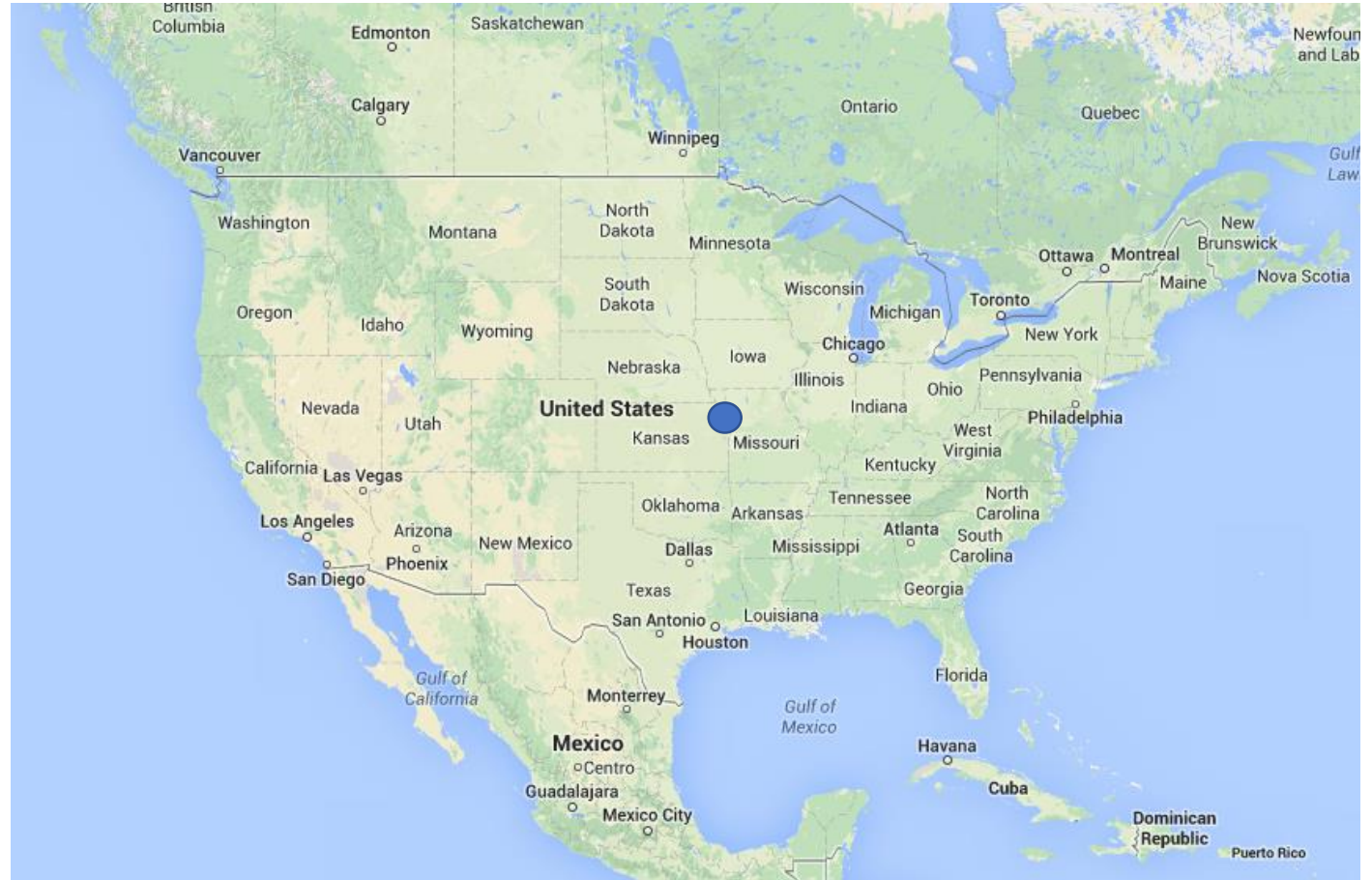
**Top Transatlantic
Opportunity**

New Support Program

Kansas City – The Heart of America

Kansas City Intl. Airport (MCI) is the largest airport serving a four-state region

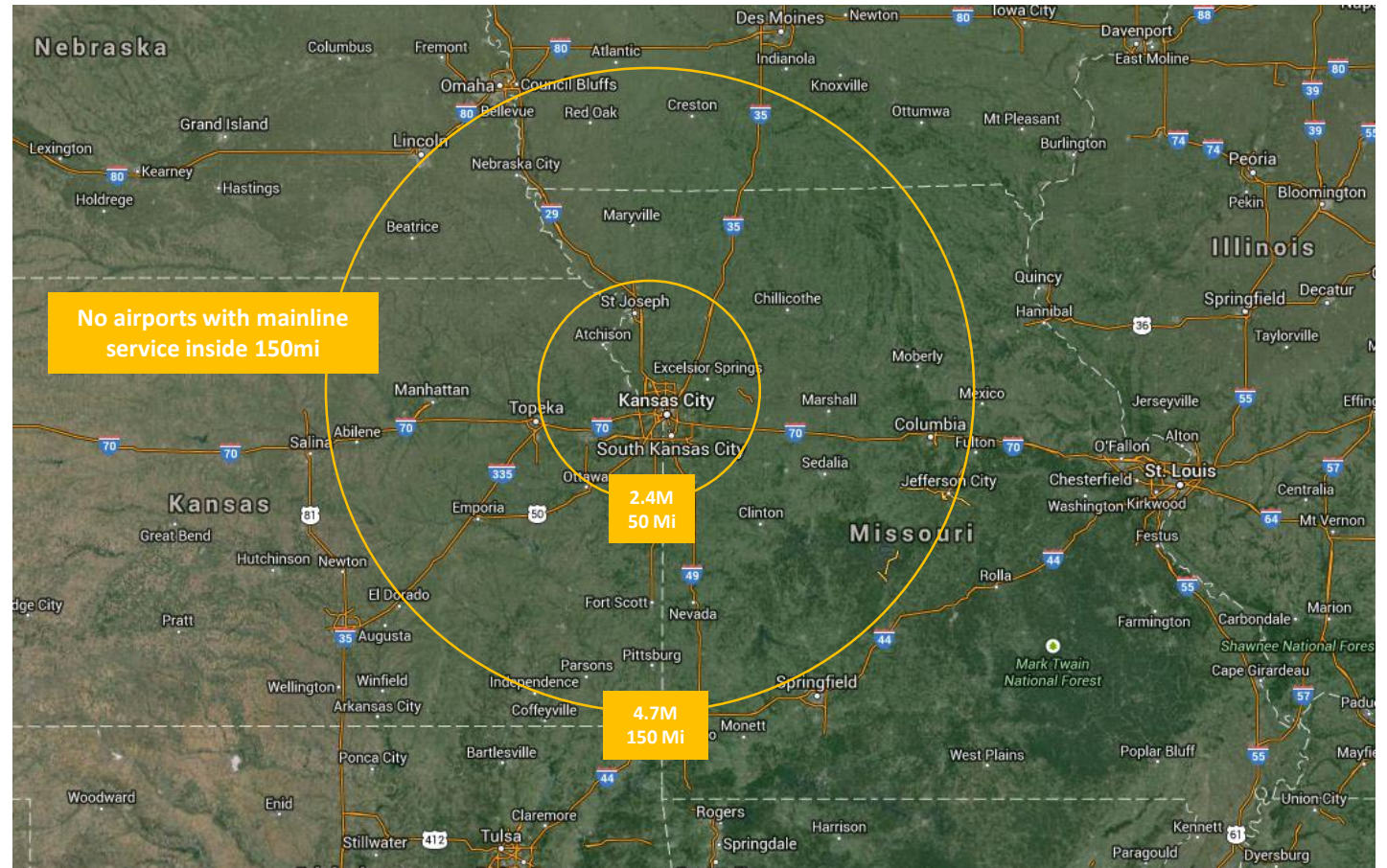
- ▶ Central location
- ▶ Large catchment
- ▶ Growing population
- ▶ Diverse economy



MCI's Catchment Area is Nearly 5M

Kansas City International Airport (MCI) regularly pulls passengers from Missouri, Kansas, Iowa, and Nebraska.

- ▶ 2.4M within 1 hour drive
- ▶ 4.7M within 2.5 hour drive
- ▶ No competitive airports within 3 hour drive



Population as of December 2020 as estimated by the United States Census Bureau

MCI's Catchment Area is Nearly 5M

Kansas City International Airport (MCI) regularly pulls passengers from Missouri, Kansas, Iowa, and Nebraska.

- ▶ 2.4M within 1 hour drive
- ▶ 4.7M within 2.5 hour drive
- ▶ No competitive airports within 2.5 hour drive

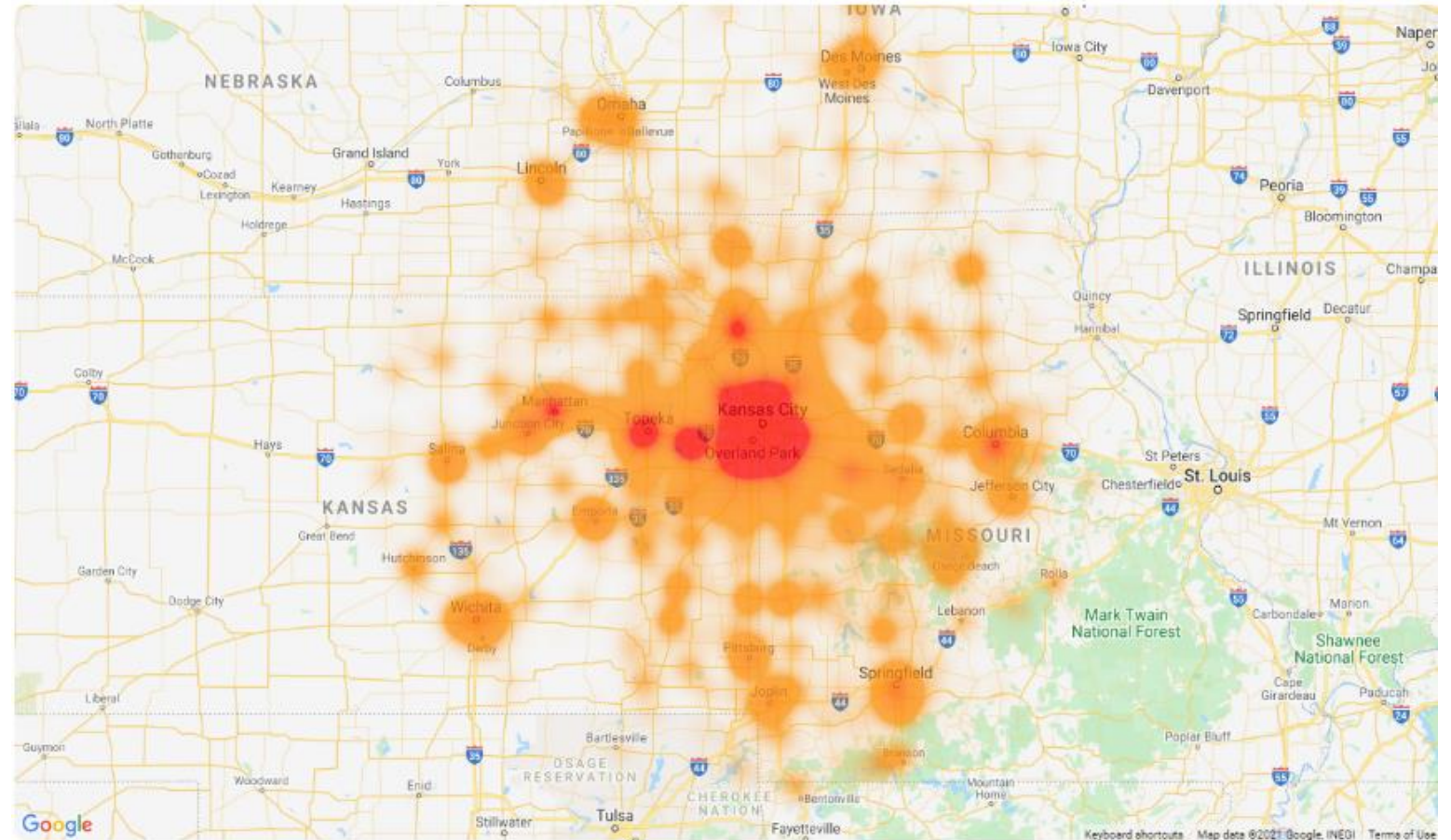


Population as of December 2020 as estimated by the United States Census Bureau

Overnight Location of MCI Passengers

A recent cell phone study proves catchment area exceeds 150 miles and pulls passengers from smaller regional cities with regional airports.

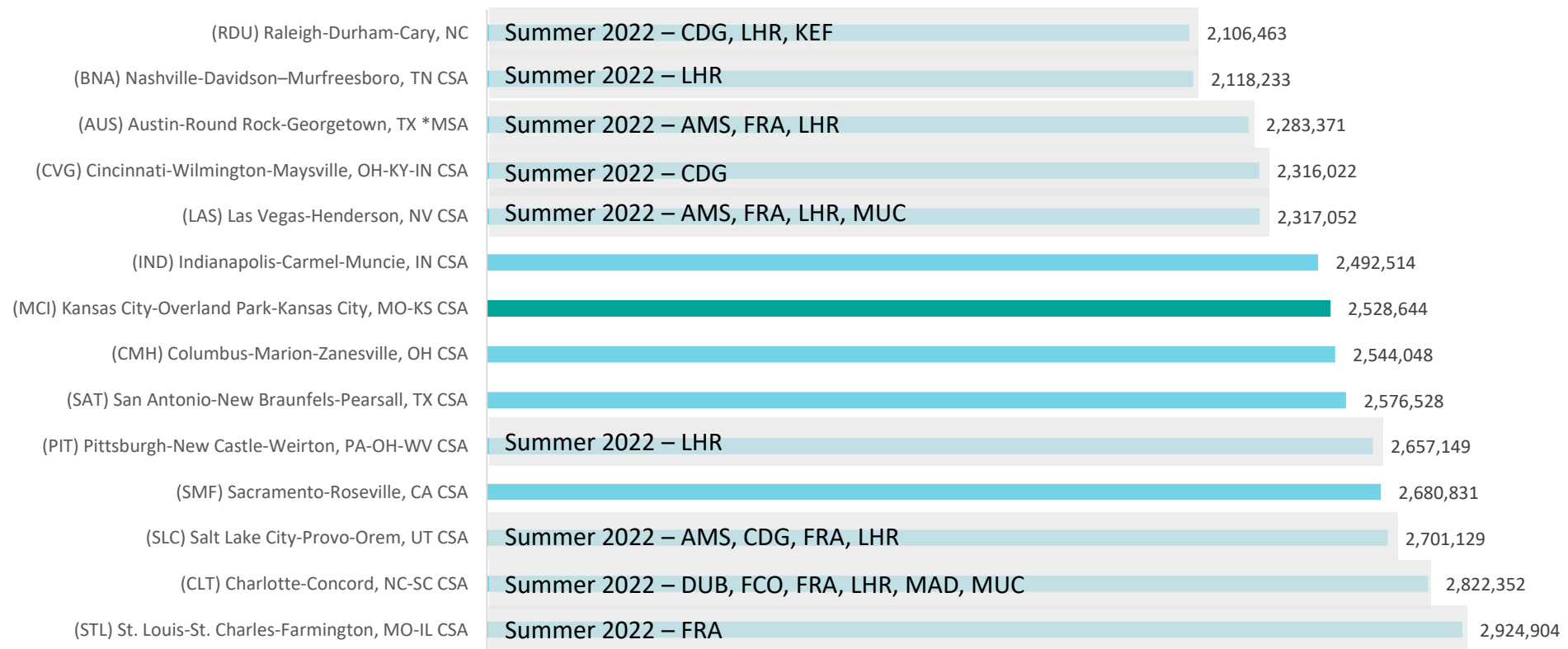
- ▶ Des Moines (DSM)
- ▶ Lincoln (LNK)
- ▶ Omaha (OMA)
- ▶ Springfield (SGF)
- ▶ Wichita (ICT)



Combined Statistical Area Comparison



Combined Statistical Area Comparison



Major Events on the Horizon

Next year's NFL Draft to be held in Kansas City in April 2023.

- ▶ Nashville (2019) saw 600,000 attendees and an estimated economic impact of \$220 million dollars
- ▶ Las Vegas (2022) estimated a larger attendance and higher economic impact

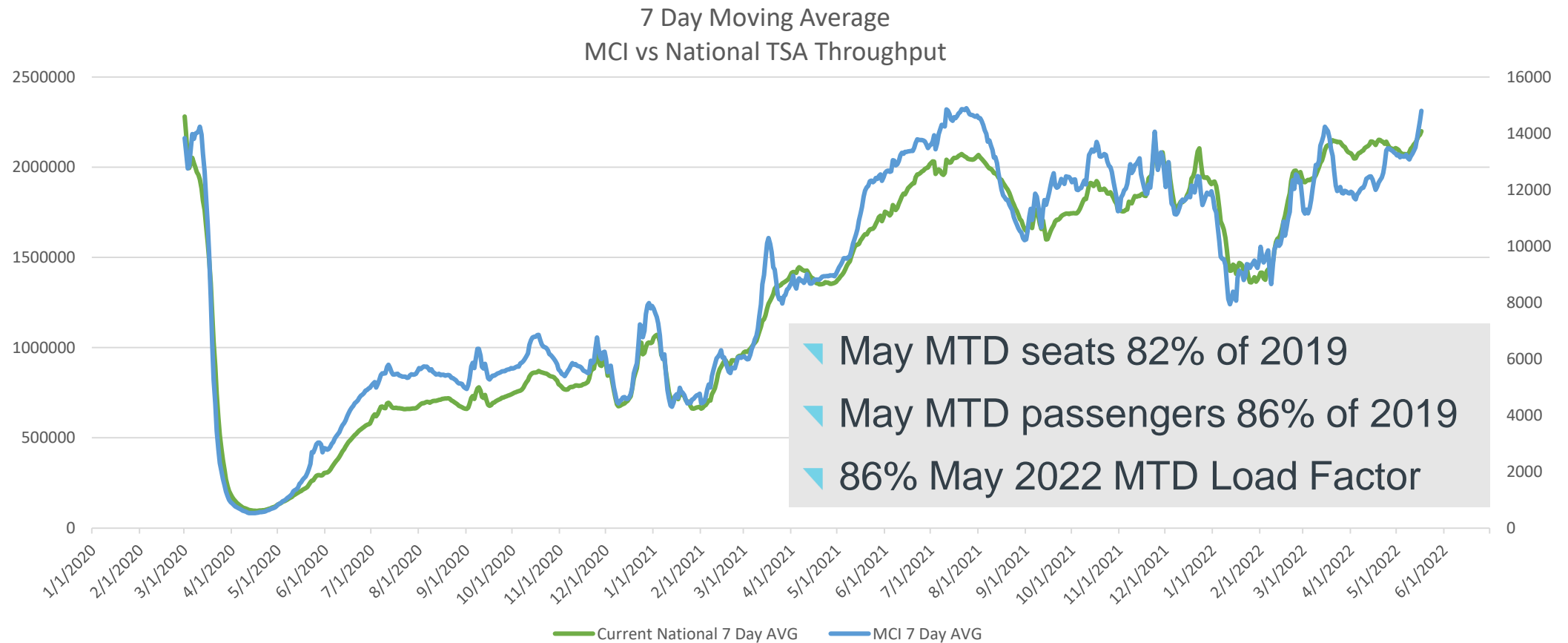


Major Events on the Horizon

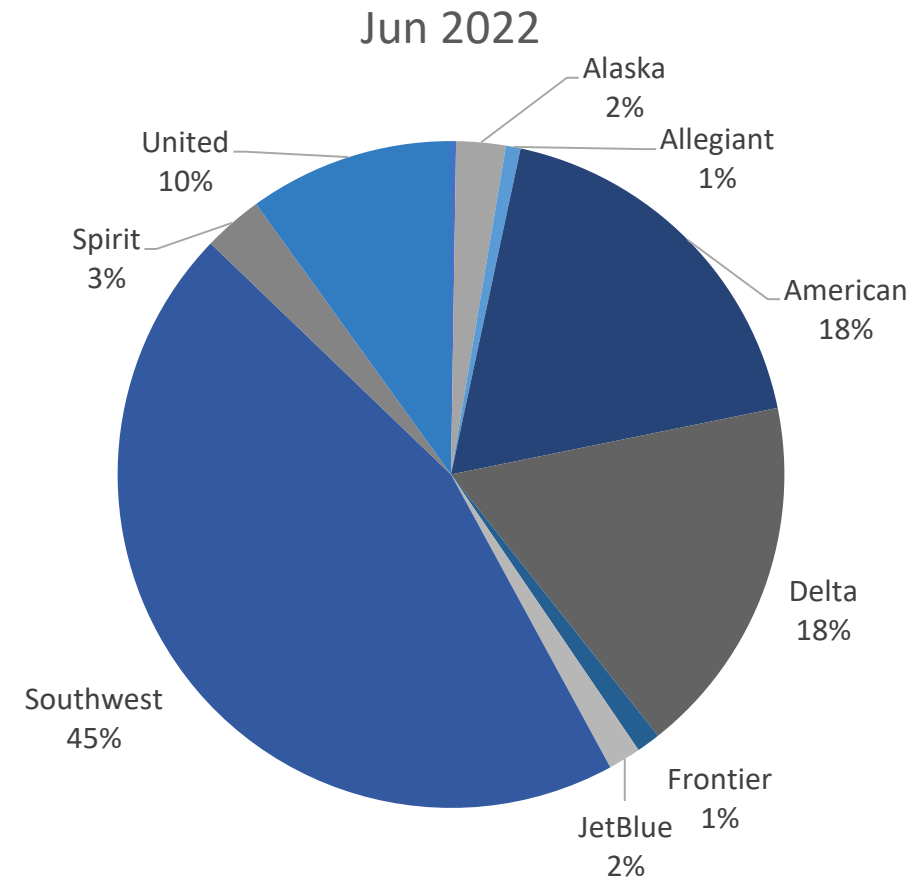
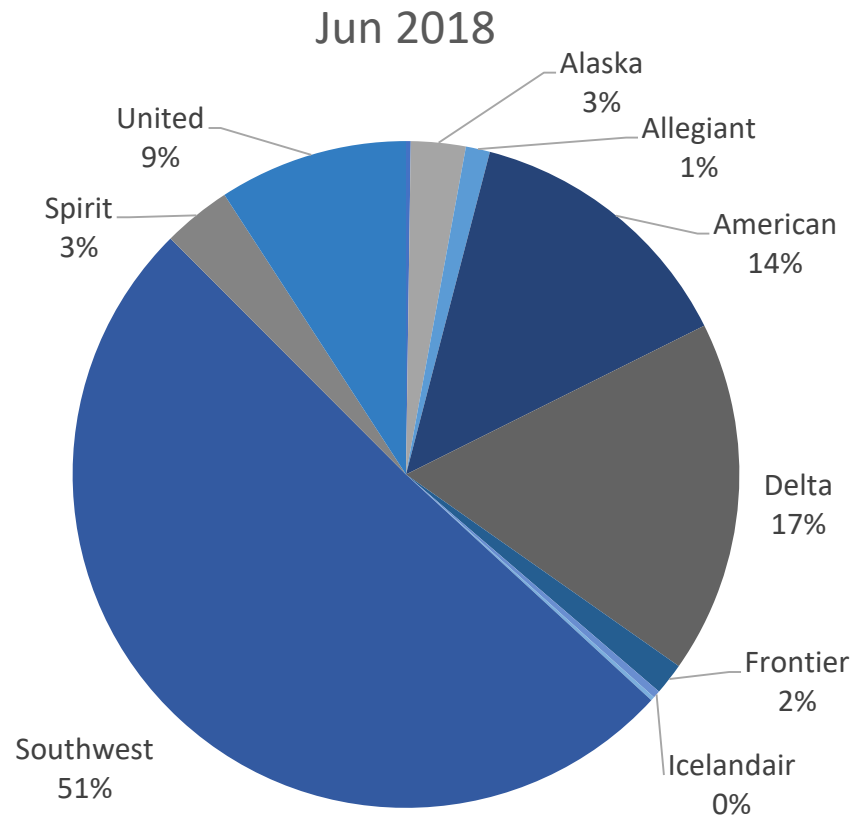
Kansas City is a final candidate to host matches in the 2026 World Cup.



Kansas City's COVID Recovery



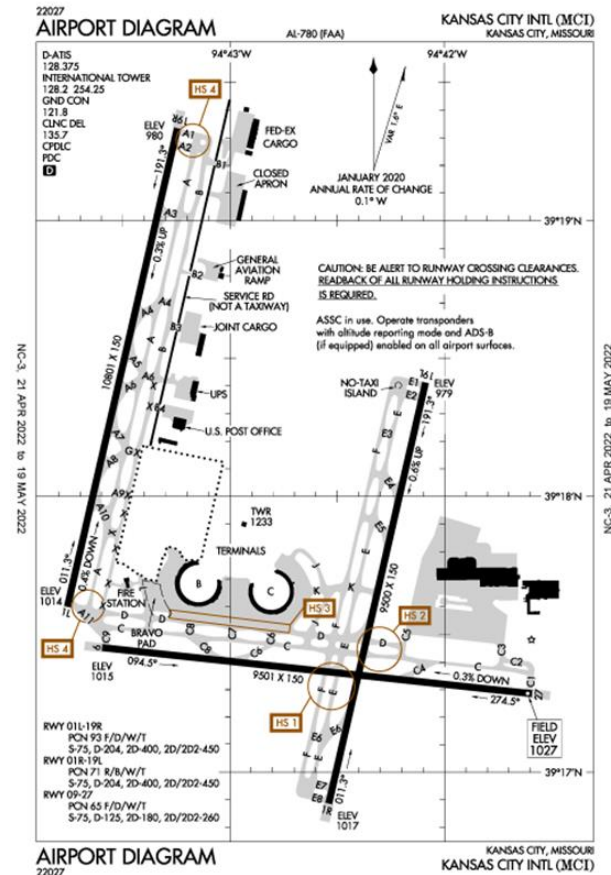
Seat Share at MCI has Shifted



Overview of MCI Airport

Kansas City Intl. Airport (MCI) is the largest airport serving a four-state region

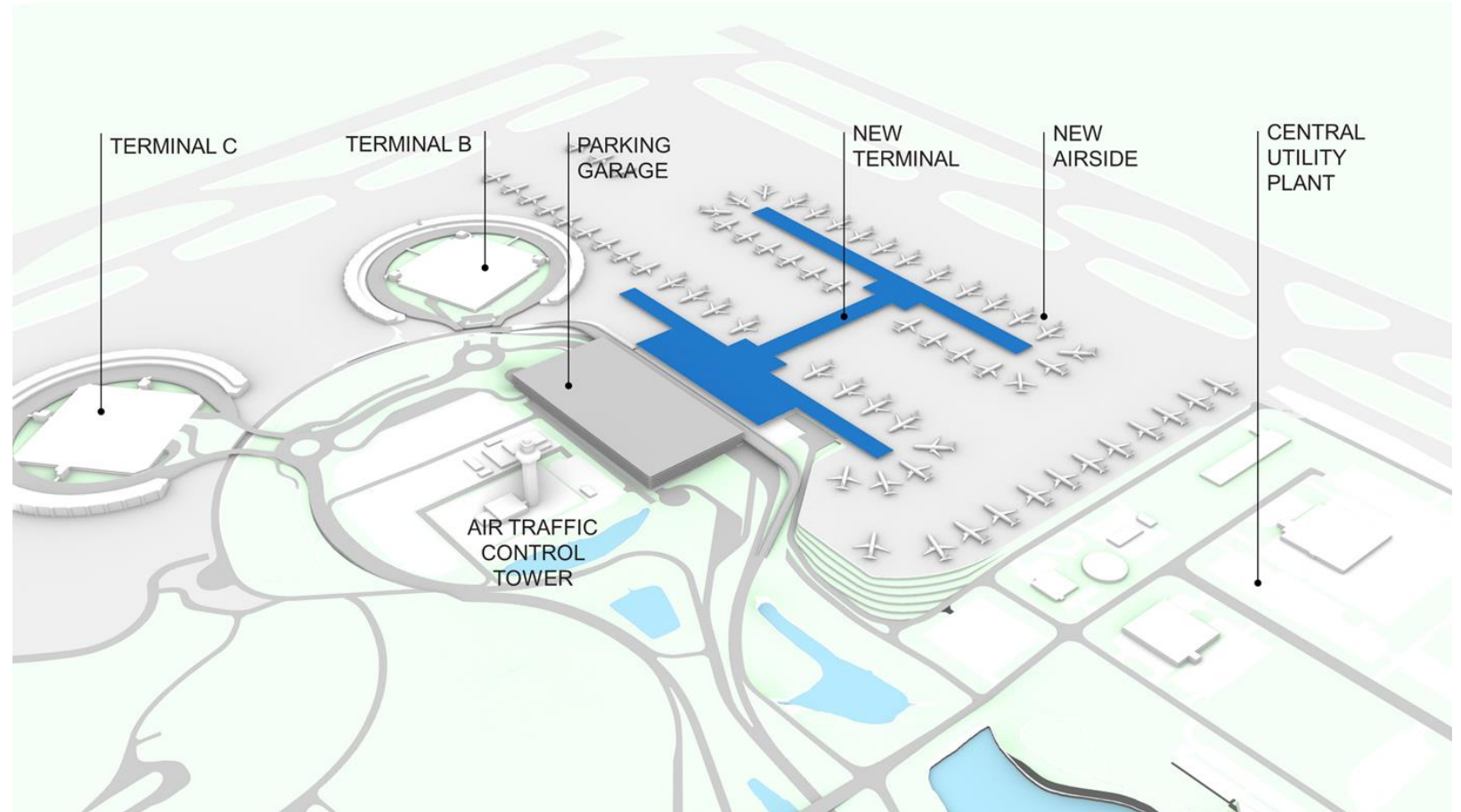
- ▶ 24-hour facility
- ▶ Three runways
- ▶ No curfews
- ▶ No slot restrictions
- ▶ Cooperative CBP/FIS team



New Terminal On-Time & On-Budget

Kansas City International Airport (MCI) will open a new single terminal in March 2023

- ▶ 40-gate facility
- ▶ Full FIS/CBP
- ▶ Common-use backbone
- ▶ Will replace existing 50 year old terminals



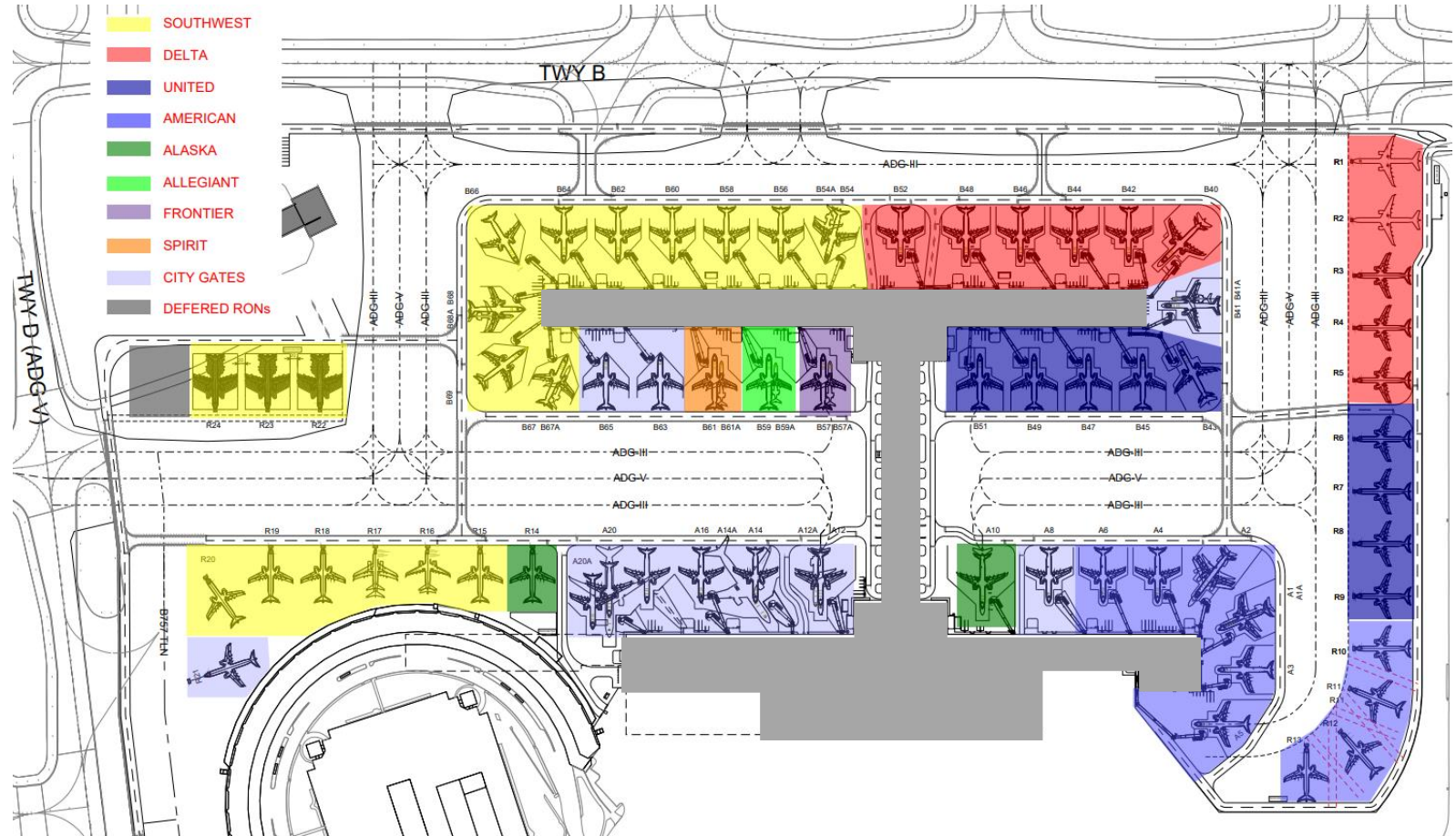
New Terminal On-Time & On-Budget



New Terminal On-Time & On-Budget

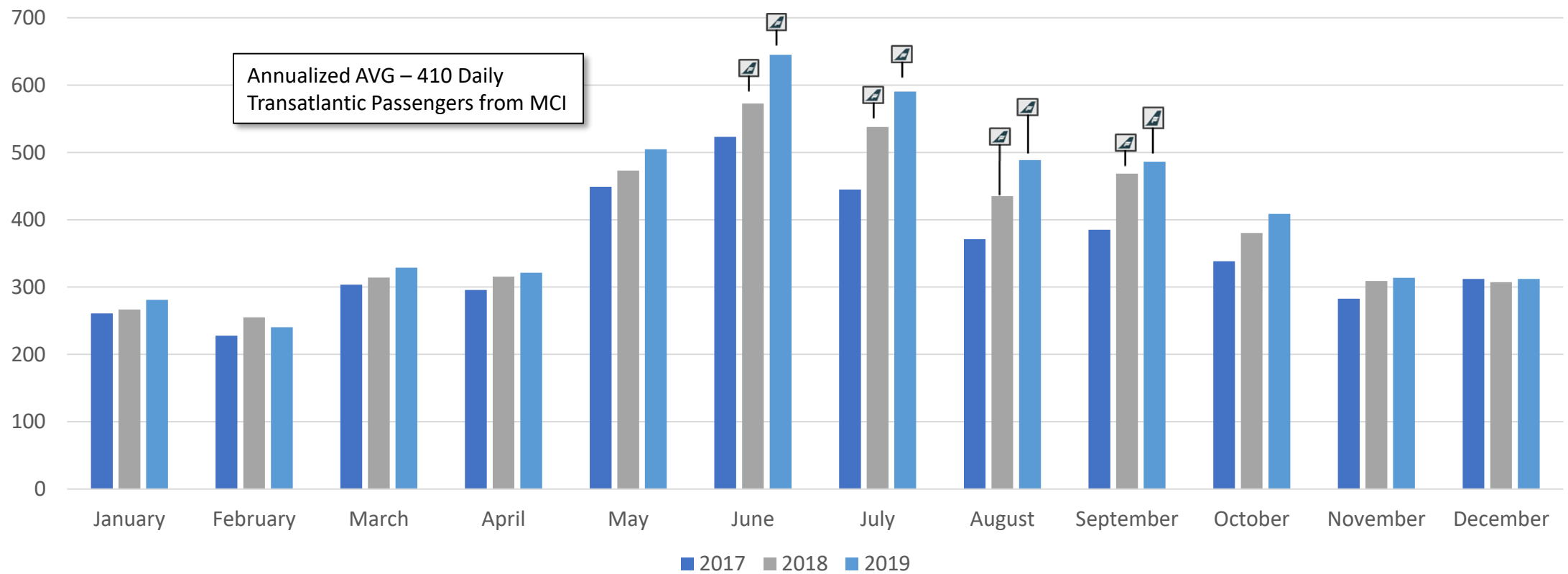
Kansas City International Airport (MCI) will open a new single terminal in March 2023

- ▶ Unleased gates are available for per-turn or signatory use
- ▶ International Operations: Five narrowbody (or two widebody) common use parking positions directly connected to FIS/CBP

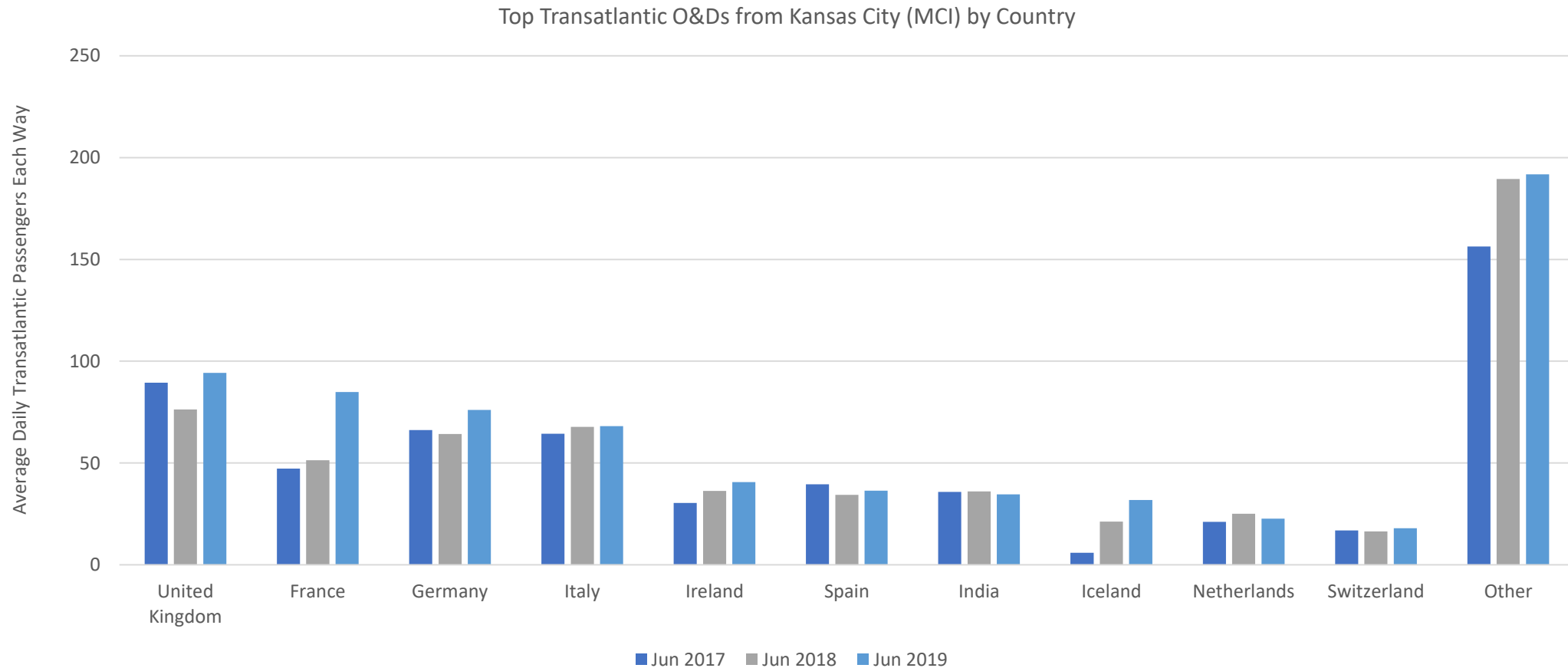


MCI Transatlantic Opportunity

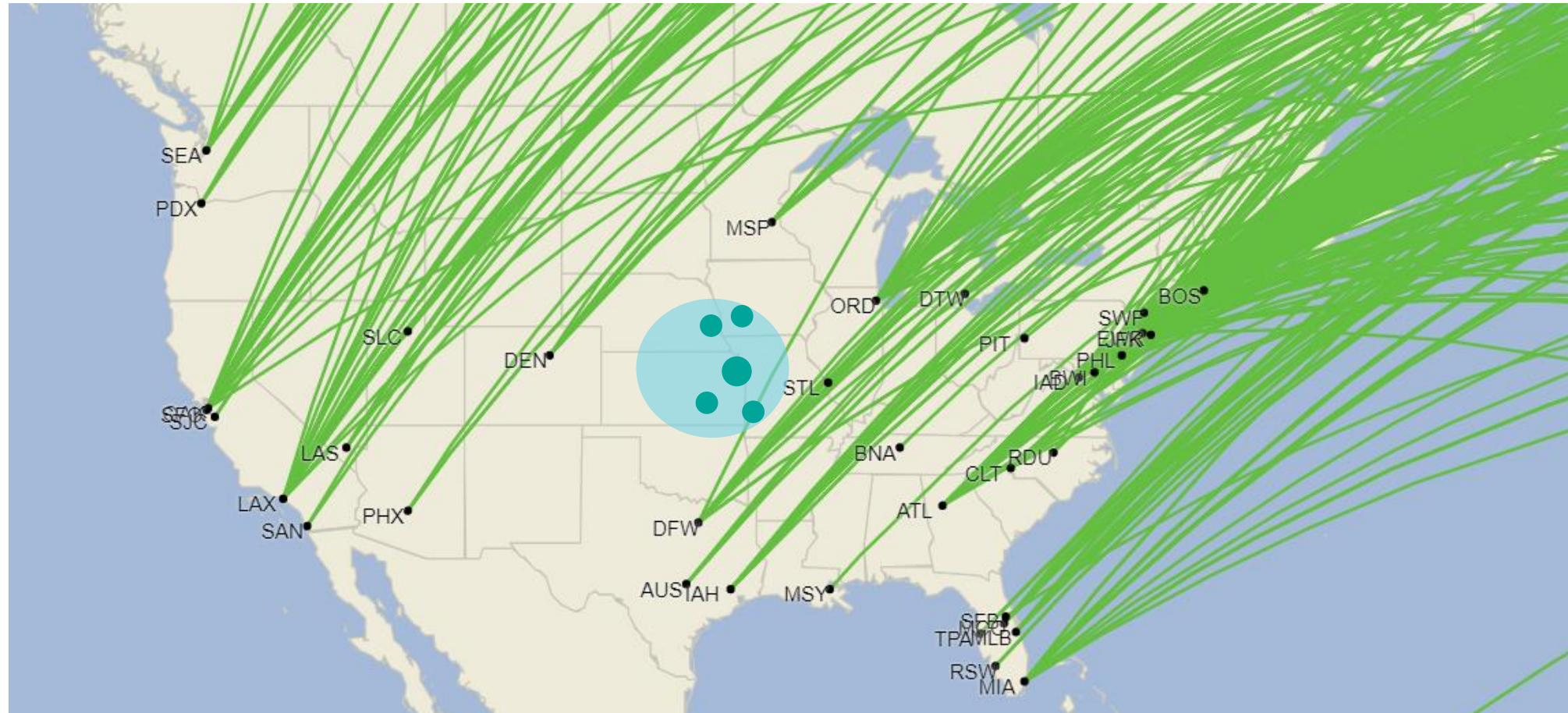
Daily Transatlantic Passenger Traffic By Month from Kansas City International Airport (MCI)



MCI Transatlantic Opportunity



Summer 2022 U.S. to Europe



Source: June 2022 flight schedules as published 18MAY22 via Diio Mi.

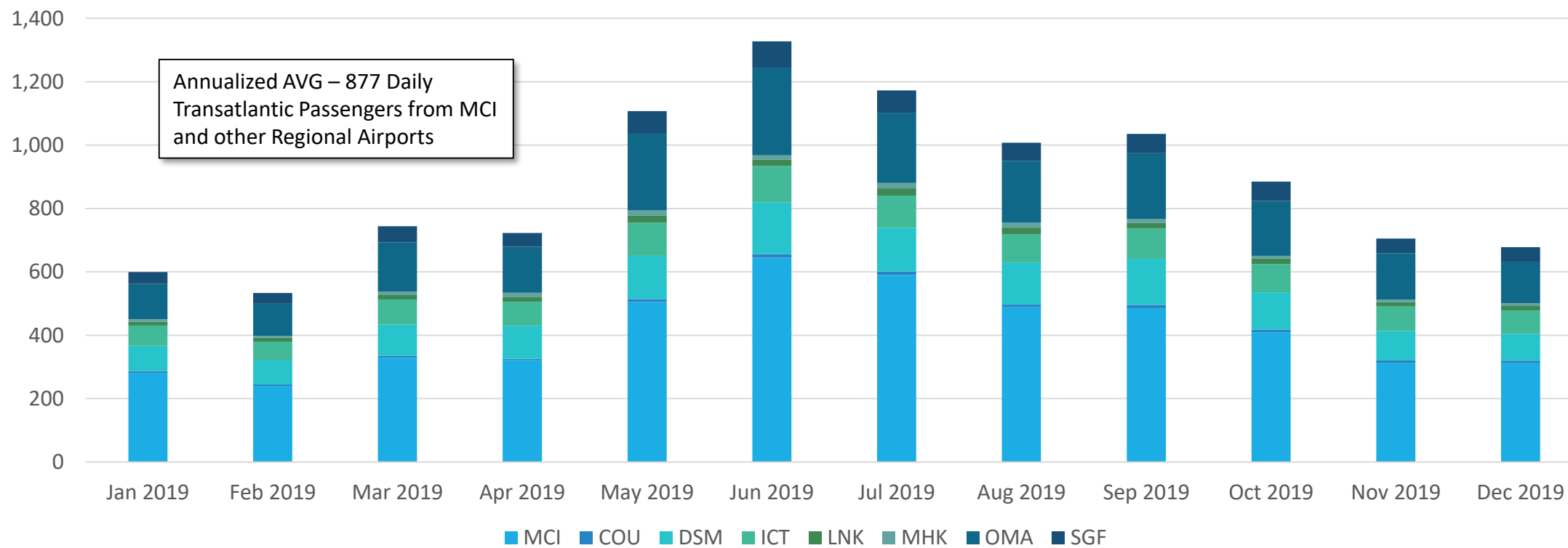
Summer 2022 U.S. to Europe - BA



Source: June 2022 flight schedules as published 18MAY22 via Diio Mi.

MCI Transatlantic Opportunity

Daily Transatlantic Passenger Traffic By Month from Kansas City International Airport (MCI) and Other Regional Airports



State Support Package

The state of Missouri has, for the first time ever, created a funding source to support new transatlantic air service.

- ▼ Completely new air service support program
- ▼ \$5 million dollar program
- ▼ Will be managed via the Missouri Department of Economic Development
- ▼ Structure of the program is not yet defined

MCI is Ready for Transatlantic Service

The time is right for an airline to launch Kansas City - Europe

- ▼ Kansas City is outperforming the national COVID recovery
- ▼ A proven catchment area with proven transatlantic demand
- ▼ New terminal opening in March 2023
- ▼ State support is available



KANSAS CITY
Aviation Department



601 Brasilia Avenue • Kansas City, MO 64153 • (816) 243-3000 ▾ [KCairports.com](https://www.KCairports.com)

A Department of the City of Kansas City, Missouri