

INDEPENDENCE POLICE

MEMORANDUM

DATE: 07-08-2021

TO: Chief Brad Halsey, via Chain of Command

FROM: Major Paul Thurman 

SUBJECT: Detention Facility- Current upgrades & future needs

I. Current Remodel project: (Funded through detainee housing savings)

(See drawing and pictures for more information)

- a. Increase Officer Booking desks to three modular workstations
- b. Install (ceiling mounted) live detention video surveillance monitors for each workstation
- c. Create employee friendly desks with two undermount monitors visible through countertop
- d. Create improved employee visibility of detainee holding area by removing obstacles normally sitting on workstations
- e. Improve/ increase employee safety and visibility through stronger barrier between employee workstations and detainee holding area
- f. Create weapon resistant barrier between detainee and employee work area
 - i. Increases safety and creates employee safe area in case of emergency
- g. Create sound barrier between detainee and employee work area
- h. Increase cabinet/ drawer/ storage area
- i. Create/improve audio/visual camera system for improved accountability against detainees frivolous claims
- j. Drywall employee workspace areas
- k. New flooring
- l. Create separate mugshot workstation
- m. Create separate fingerprint workstation
- n. Double the size of employee working area
- o. Create detainee property locker area near employee workstations for efficient and safe workflow
- p. Increase countertop space in safe workspace for miscellaneous projects
- q. Create processing workspace for arresting officers
- r. Improved LED lighting throughout detention facility
- s. Create additional emergency ingress/egress doorways
- t. Create new hallway from detainee holding area to cells
- u. Create smaller male/female cells in holding areas

- v. Create dedicated location for safety/ "de-escalation" equipment
- w. Create detainee pat-down area
- x. Create employee locker and "non-working" safe area in Supervisors office
- y. Install WiFi within Detention facility
- z. Create mobile WiFi video arraignment system
 - i. Increases safety of Detention Officers
 - ii. Eliminates the removal of detainees from cell for mandatory court
- aa. Purchases Seven (7) bunkbeds for increased detainee numbers in cells
- bb. Removal of Administrator office to create additional space. (Administrator was moved out of detention. Not considered a positive but necessary for improvements)
- cc. Increase detainee handcuff bench space to lessen unrestrained detainees from walking around and increase safety
- dd. Purchase improved and mobile restraint chair which increases safety and lessens struggles during application
- ee. Create three "de-escalation" padded cells for increase safety and reduction of violent behaviors towards self and others
- ff. Removal of tables in cells to reduce ability for self harming incidents
- gg. Removal of cell #1 bed for violent, erratic and self harming detainee destructive behaviors (Increased safety)
- hh. Purchased portable beds for detainee overflow and "de-escalation" cells
- ii. Create property processing area for arresting officers in Sally Port

II. Feasible future Improvements: (Not funded)

- a. Replacement of "bar" cell doors with solid doors (Safety item)
 - i. Reduces ability for detainee suicide and/or attempts
 - ii. Reduces noise and ability for detainees to agitate each other
 - iii. Eliminates detainee ability to throw feces, food, paper products at officers or other detainees
 - iv. Eliminates detainee ability to grab/ assault/ injury other detainees and Detention Officers through the bars
- b. Remove and replace sinking concrete infrastructure
- c. Remove and replace, as necessary, deteriorated cinder block walls
- d. Removal and replace plumbing in back corridors
- e. Removal and replace with modern waterless detention toilets
- f. Create modern kitchen food preparation area
- g. Create interview room
- h. Create DUI processing area
- i. Technology improvements
 - i. Remote jail door opening capabilities (safety item to allow additional personnell into detention during an emergency)

- ii. Remote panic alarm directly to dispatch and audible in Police Building (Safety item)
- iii. Remote sallyport door opening system
- iv. Detainee identification systems
- v. Computer software for detainee cell location
- vi. Tablets (books/TV) for detainees (funding source)
- j. Increase Detention Supervision by 2
 - i. Would have a supervisor for each shift

III. Modern detention center upgrades: (Not funded or practical at current facility)

- a. Increase number of employees
- b. Increase sallyport footprint to accommodate at least four (4) transporting vehicles
- c. Bonding facility attached to Detention area
 - i. Eliminates employee having to walk to another police floor to deliver paperwork to the Records Unit
 - ii. Improves security for Police Building as Bondsman will have dedicated location not within confines of Police Headquarters
- d. Release portal for detainee directly from facility
 - i. Eliminates detainees walking through employee areas of Police Department for release
 - ii. Increase safety for employees that walk with detainee up flights of stairs to release them
- e. "Tube" delivery system for paperwork between multiple PD units
- f. Increase detainee cells from thirteen to 55 cells
 - i. 20 Men cells
 - ii. 20 female cells
 - iii. 5 padded de-escalation cells
 - iv. 5 gender identity cells
 - v. 5 juvenile cells
 - 1. Increase segregation cells for disruptive behaviors
 - 2. Increase single cells for safety and violent offender isolation
 - 3. Reduces contract housing expenses through fewer outsourced detainees
- g. Increase detainee property storage area
 - I. Purchase detainee property size and odor reducing shrinkwrap machine
- h. Purchase detainee valuables shrinkwrap machine
- i. Purchase detainee property conveyor storage system machine
- j. Create Pod system
 - i. Center console employee area
 - ii. Detainee cells circle the employee area
 - 1. Increases security for employee and detainee
 - 2. Increases visibility of detainees

- k. Build Medical office
 - i. Reduce Officers time spent at hospital with detainees
 - ii. Treat detainees for minor problems in house
 - iii. Perform medical intake questionnaire by a professional
- l. Fire suppression system
- m. Emergency exit (Safety item)
 - i. Enables secondary exit point from different vantage points within detention
 - ii. Provides secondary tactical entry/ exit point during tactical situations





BAC HALLWAY

BAC ROOM

OLD RESTAURANT
ZOOM
New Hall
to Bell
Book

EXISTING
KITCHEN

D/M
S
A
P
E
S
T
O
R
A
G
E

TEMP
CELL
#1

TEMP
CELL
#2

BENCH

BENCH

SUPERVISOR
OFFICE

(3)
BENCH

MAIL ENTRY

(3)
BENCH

AM

PRINT
MAIL

#7
COOPERS

#3
COOPERS

COUNTER

5'-

C
O
O
P
E
R
S

C
O
O
P
E
R
S

PROPERTY
SOCIETIES

COUNTER / COOPER

COOPERS

ADOUNTER

COUNTER

1ST CELL

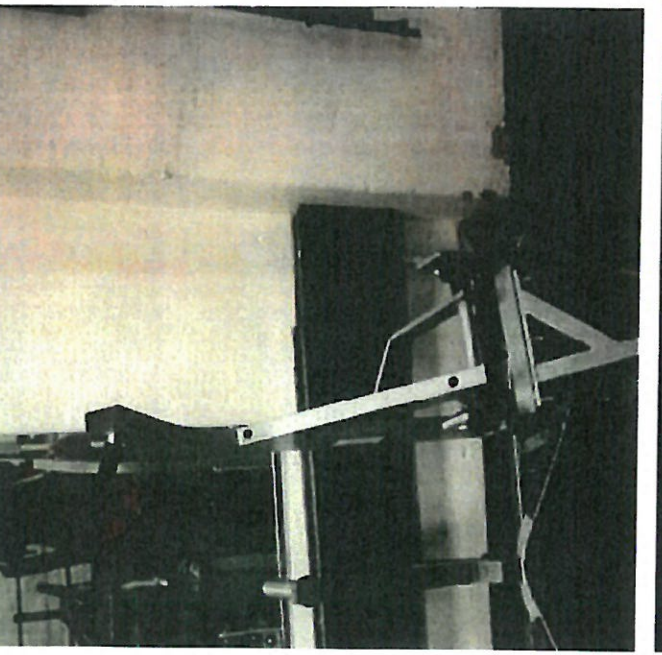
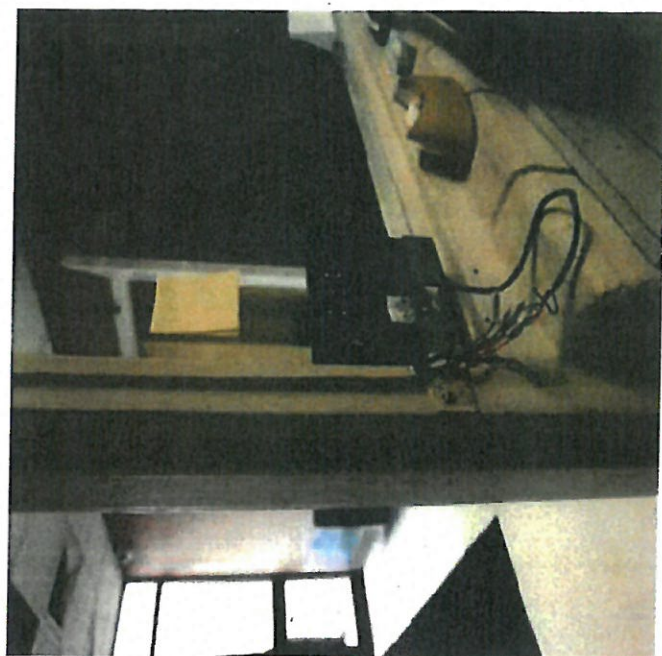
PLUMBING
CORRIDOR

EMPLOYEE
BATH

COFFEE

PROPERTY SOCIETIES
COOPERS

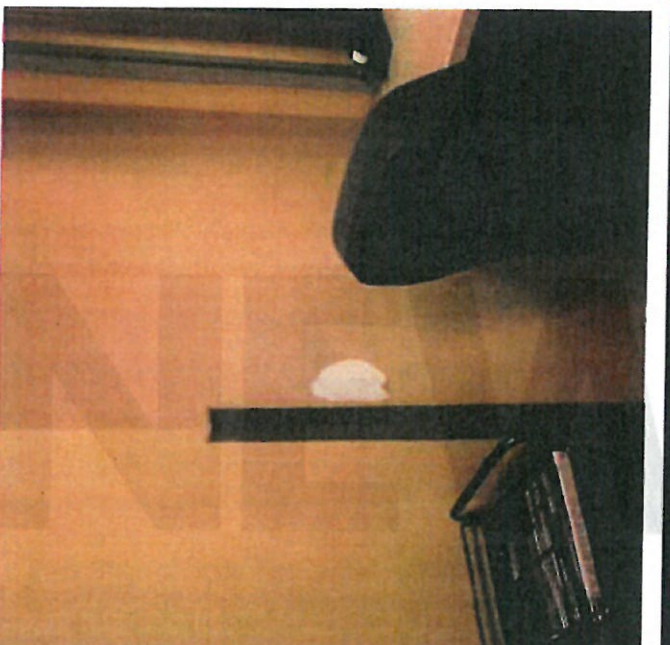
EMPLOYEE
BATH



INDEPENDENCE POLICE
MASTER PLAN



HOEFER WYSOCKI



INDEPENDENCE POLICE
MASTER PLAN



AK HOEFER WYSOCKI